

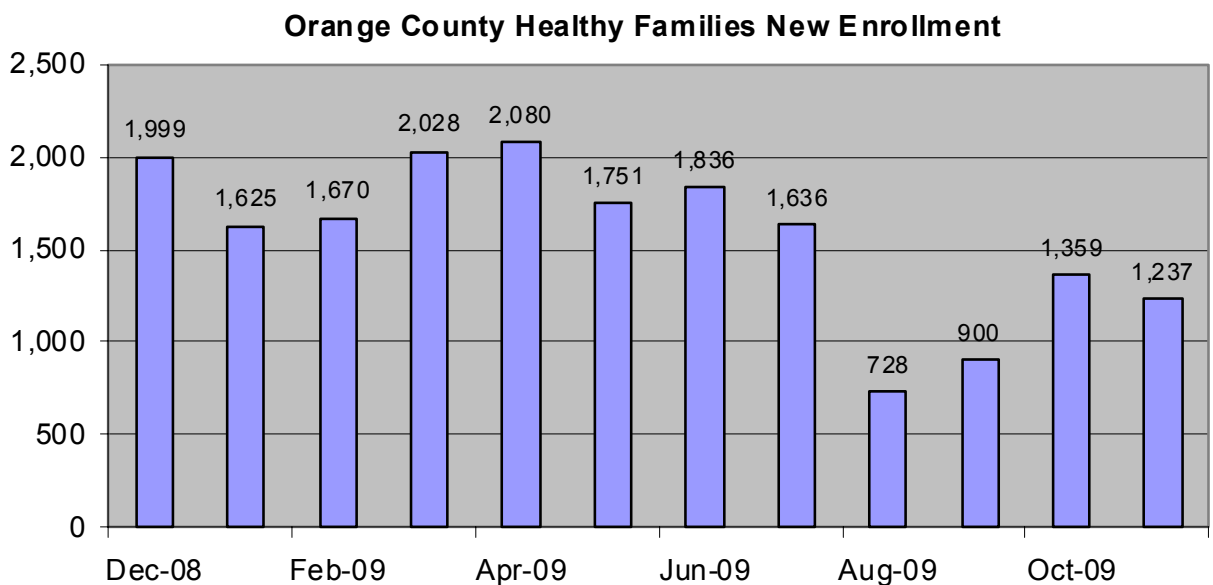


## Healthcare & Social Services

- Orange County social service usage increased in recent years as the economy has deteriorated after starting to decline in spring-summer 2009.
- Orange County patterns have followed state patterns.
- Healthy Families Enrollment for Orange County fairly constant for last year after peaking in April 2009. However, the state budget crisis over the summer of 2009 obscures the recent trend though it does appear enrollments are decreasing.

### Enrollment in Healthy Families

This indicator shows the new enrollment statistics for Orange County residents into the Healthy Families health insurance program.



\*August and September decline due to state budget crisis.

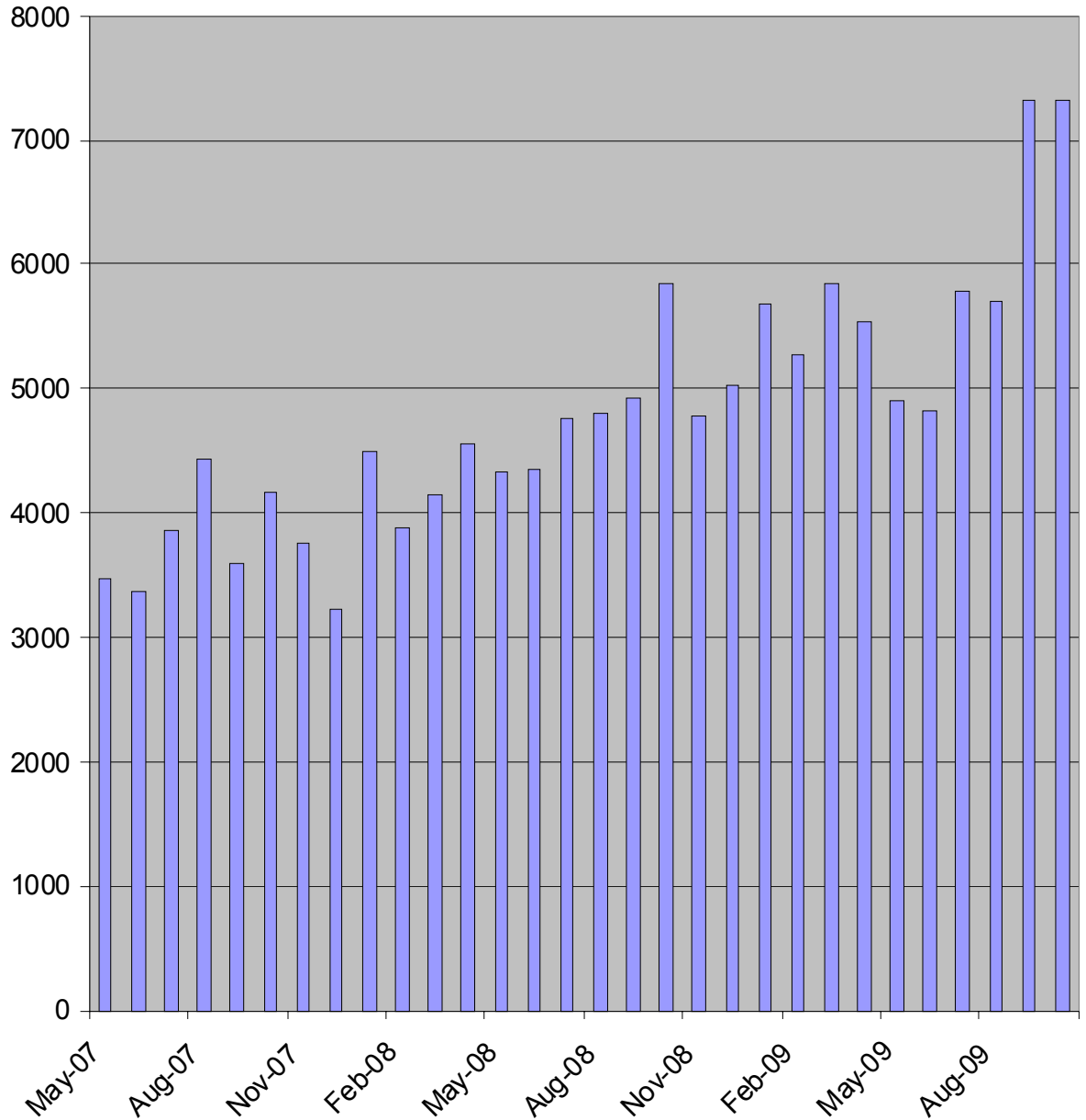
[Source: Healthy Families Program, State of California](#)



### Food Stamp Applications—Orange County

This indicator shows the number of applications for Food Stamps received by month from Orange County residents.

**Orange County Application Received Food Stamps 2007-2009**



[Source: California Department of Social Services](#)

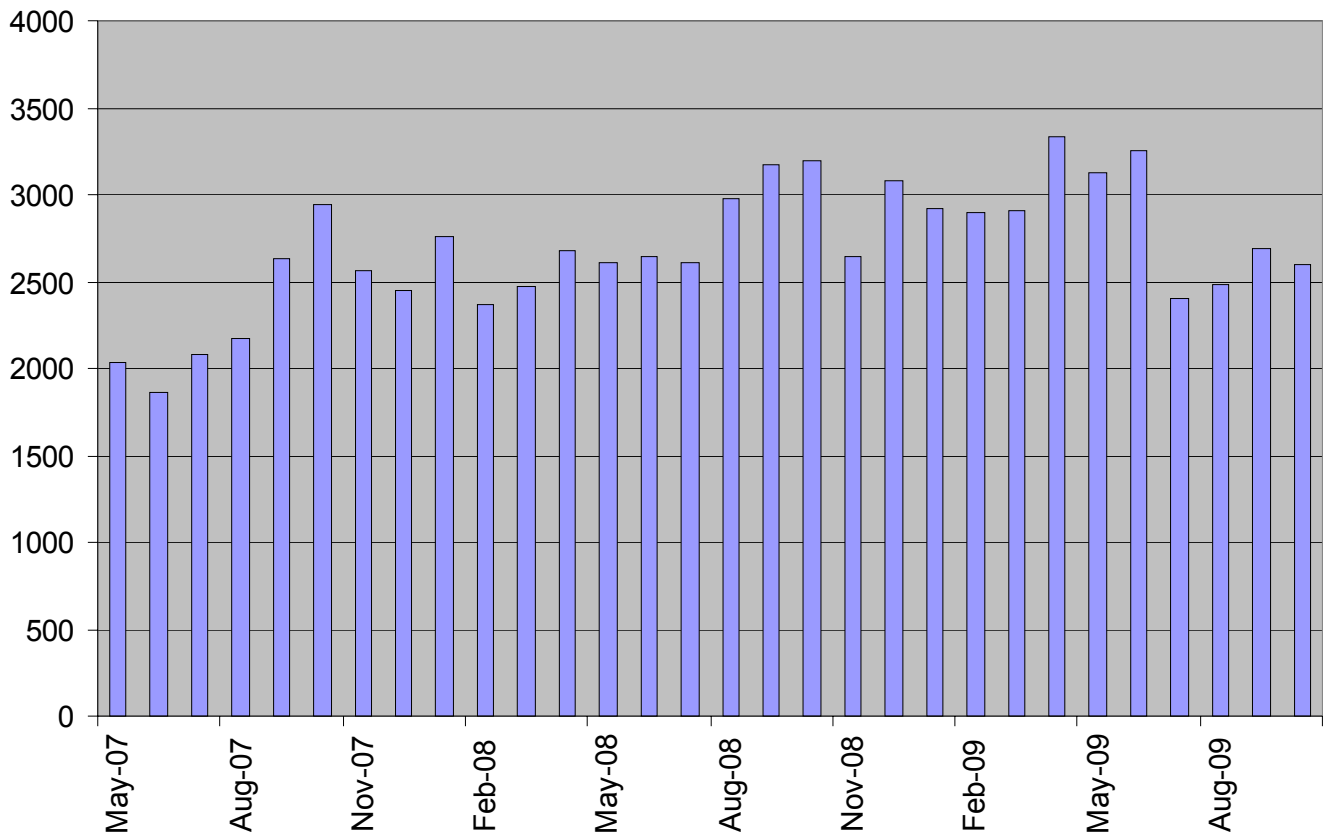
ORANGE COUNTY ORANGE COUNTY



### CalWORKS Applications—Orange County

This indicator shows the number of applications received by month from Orange County residents for participation in the CalWORKS program.

**Orange County Application Received CalWORKS 2007-2009**



[Source: California Department of Social Services](#)

ORANGE COUNTY ORANGE COUNTY