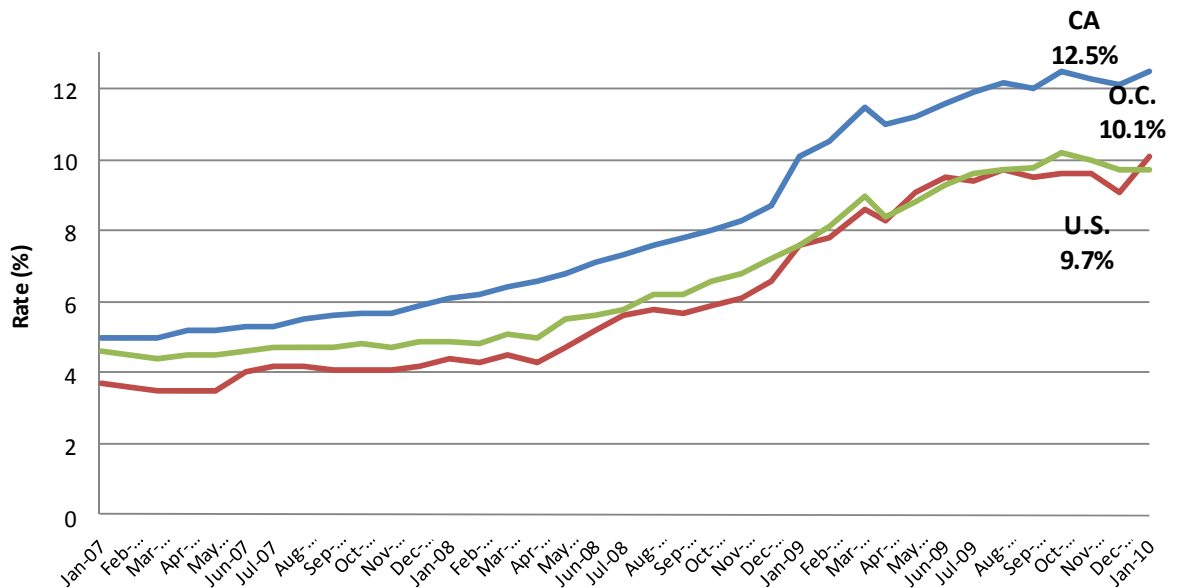




Population & Employment

- Orange County unemployment rate has spurted up since the beginning of 2010 defying the trend for the nation where employment has begun to decline.
- California employment indicator index shows some recovery after steep declines through the fourth quarter of 2008 and first two quarters of 2009 with some recovery through the remainder of the year.
- Orange County industry employment moderated in dropped significantly in most sectors with the biggest declines in Business and Professional Services, Construction and Durable Goods Manufacturing.
- Orange County population continues to grow at a steady pace since 2000, in contrast to more modest growth in California population.

Three-Year Trend in Orange County, California, and U.S. Unemployment Rates



This indicator measures the unemployment rate for Orange County, California and the United States over the since January 2007.

[Source: California Employment Development Department](#)

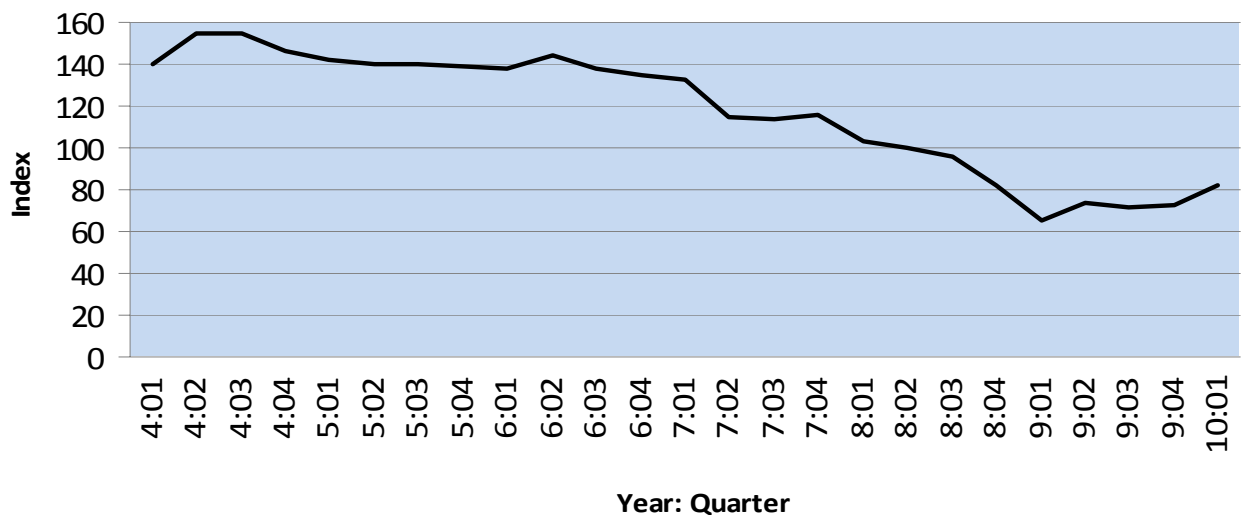
California Employment Indicator Index

ORANGE COUNTY ORANGE COUNTY



This indicator measures Chapman University's Employment Index Indicator. The California Index of Leading Employment Indicator is comprised of variables found to have a significant influence on California's payroll employment growth. These variables include movements in the lagged values of real GDP, real exports, the S&P 500 and the state's total construction spending. A weighted average of changes in these variables, based on their relative importance in explaining state employment growth, is used in constructing the index.

California Employment Indicator Index



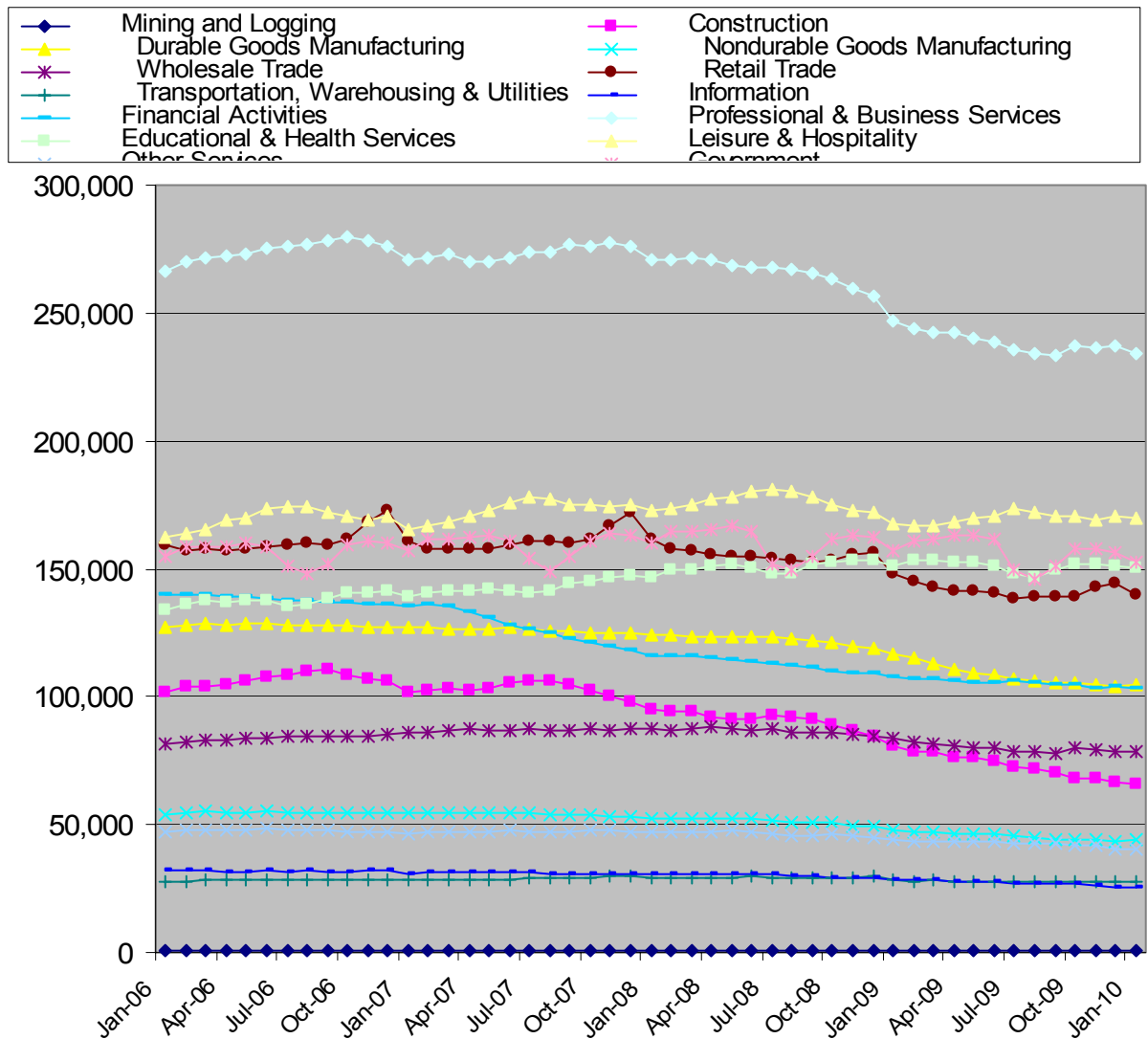
[Source: Chapman University](#)



Orange County Industry Trends by Month

The Orange County Industry Trends indicator measuring monthly changes for industries shows the more immediate and recent trends in industry employment for Orange County.

Orange County Industry Trends By Month 2006-2010



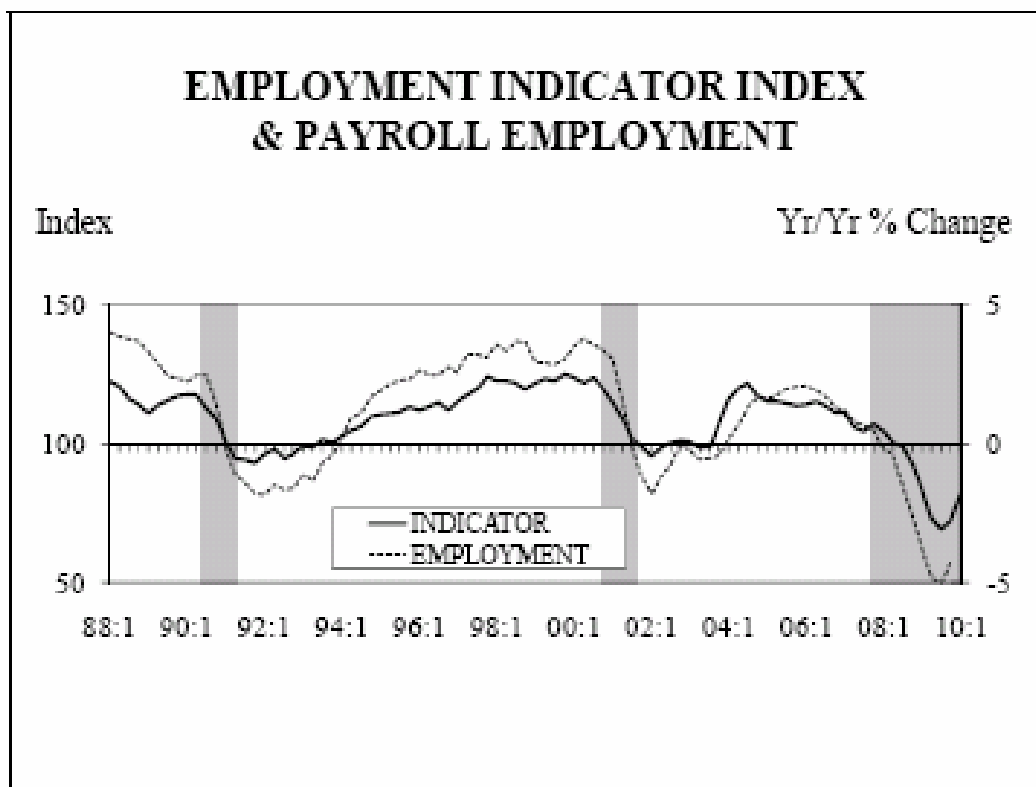
Source: California Employment Development Department

ORANGE COUNTY ORANGE COUNTY



California Employment Indicator Index and Payroll Employment

This indicator shows the Employment Indicator Index's relationship with Payroll Employment year over year percentage change. Understanding how the Employment Indicator Index is related to year over year Payroll Employment change demonstrates how adjustments in the Employment Indicator Index predict upcoming trends in Payroll Employment

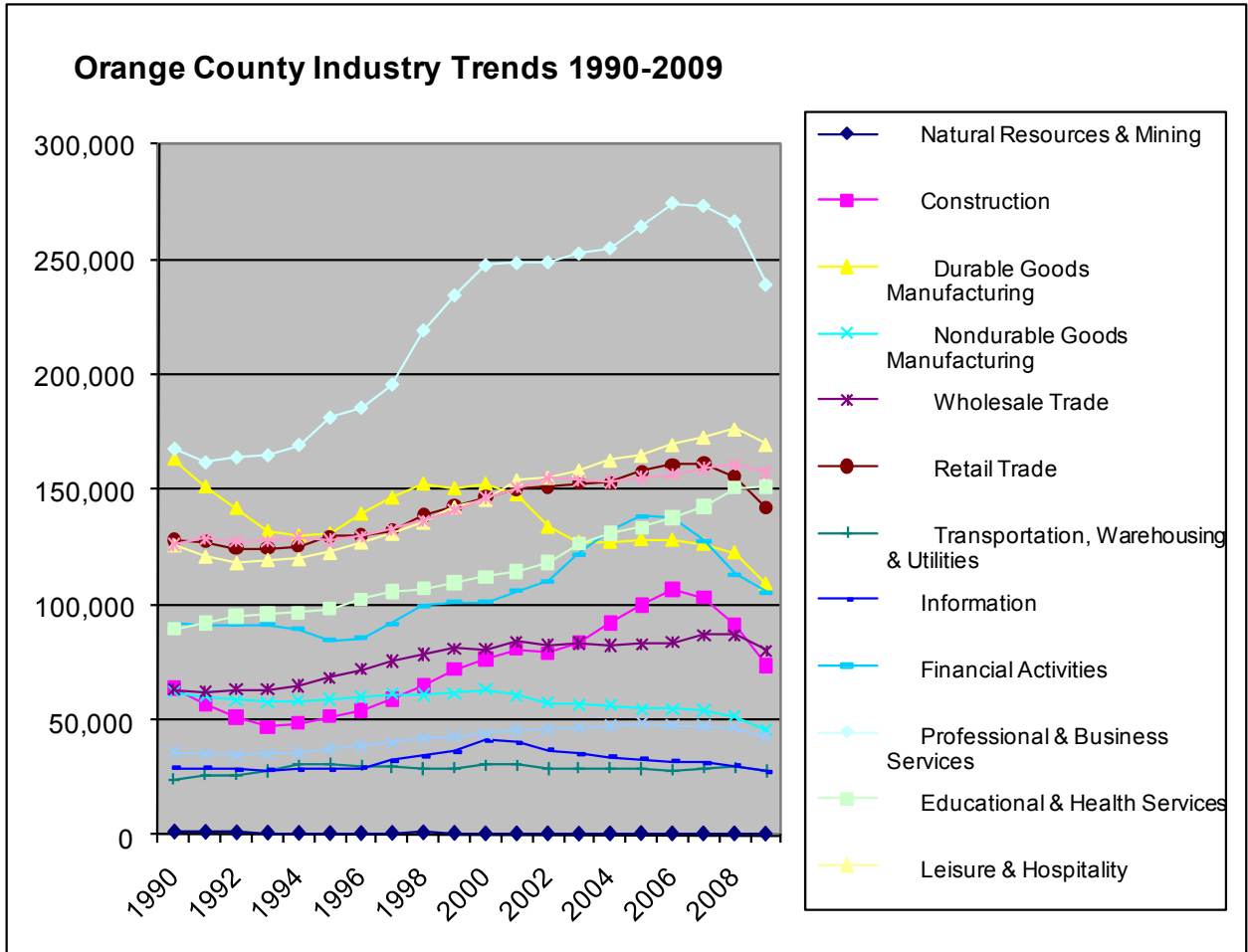


[source: Chapman University](#)



Orange County Industry Trends 1990-2009

The Orange County Industry Trends indicator measuring annual changes for industries shows the big-picture long-term trends in industry employment for Orange County.



Source: [California Employment Development Department](#)

ORANGE COUNTY ORANGE COUNTY

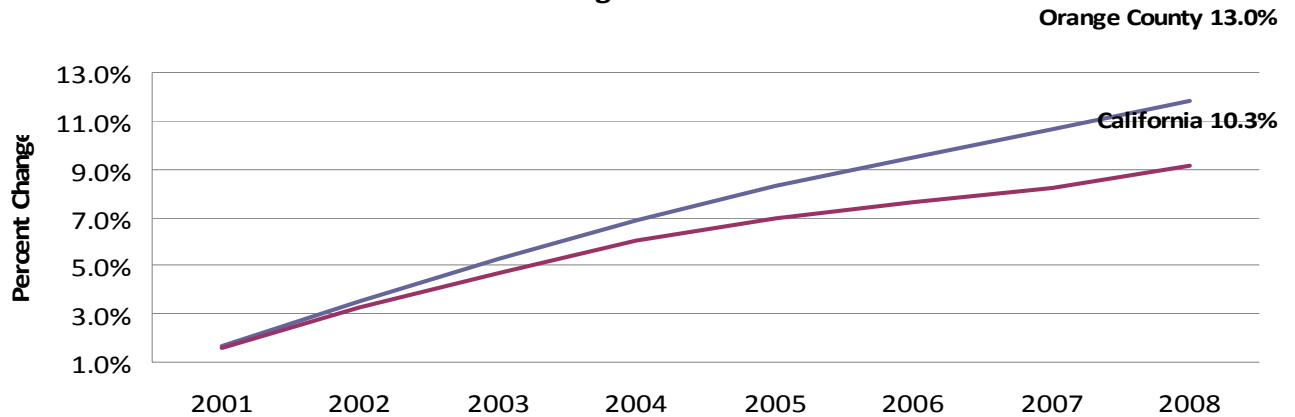


Orange County Population Trends

This indicator measures current population growth relative to times in the past for Orange County and California. Orange County has shown faster population growth than the State as a whole.

Population	1990	2000	2009
California	29,760,021	33,998,767	38,292,687
Orange County	2,410,668	2,856,918	3,139,079

Population Trend
Percent Change Relative to 2000



Source: US Census Bureau and California Department of Finance

ORANGE COUNTY ORANGE COUNTY