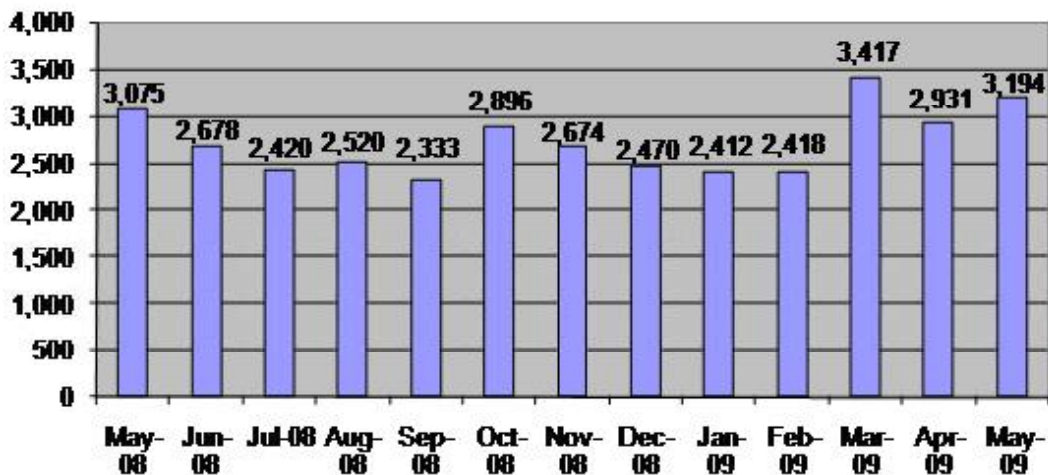




ORANGE COUNTY

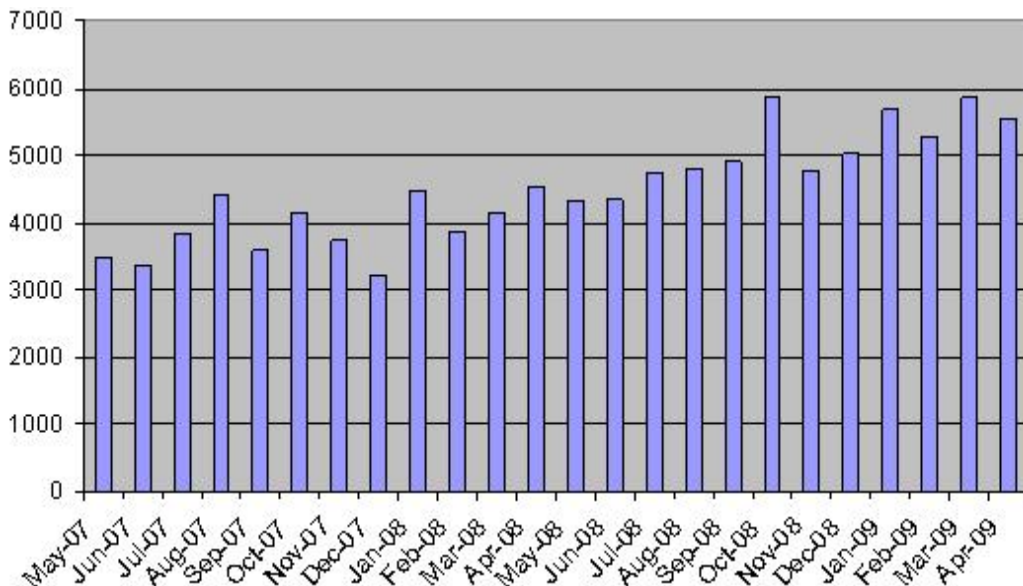
- **Orange County social service usage increased in recent years as the economy has deteriorated.**
- **Orange County patterns have followed state patterns.**
- **Healthy Families Enrollment for Orange County has been fairly constant for the last year.**

Orange County Healthy Families New Enrollment



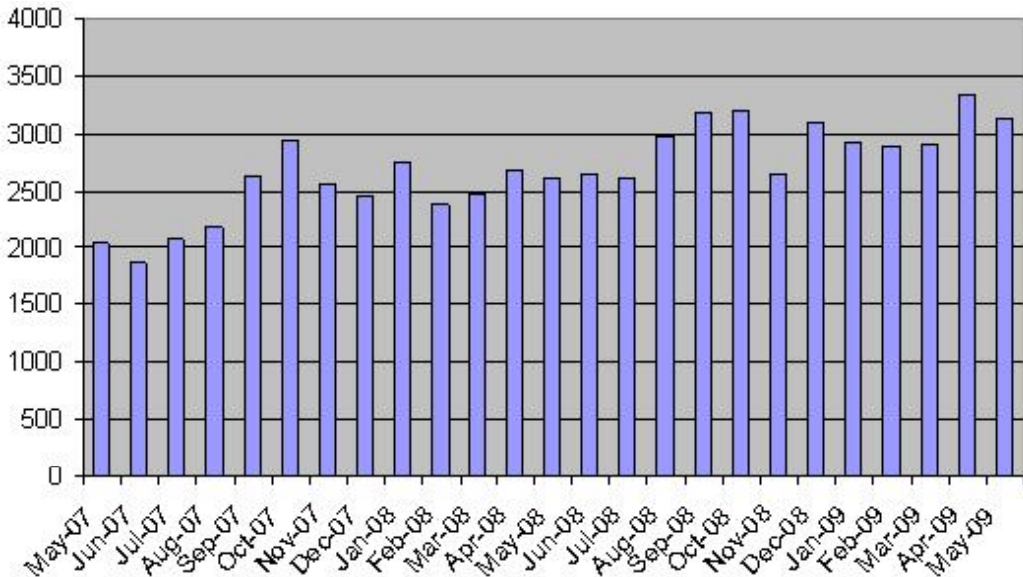
Source: Healthy Families Program, State of California at <http://www.mrmib.ca.gov/MRMIB/HFPRReports1.shtml>

Orange County Application Received Food Stamps 2007-2009



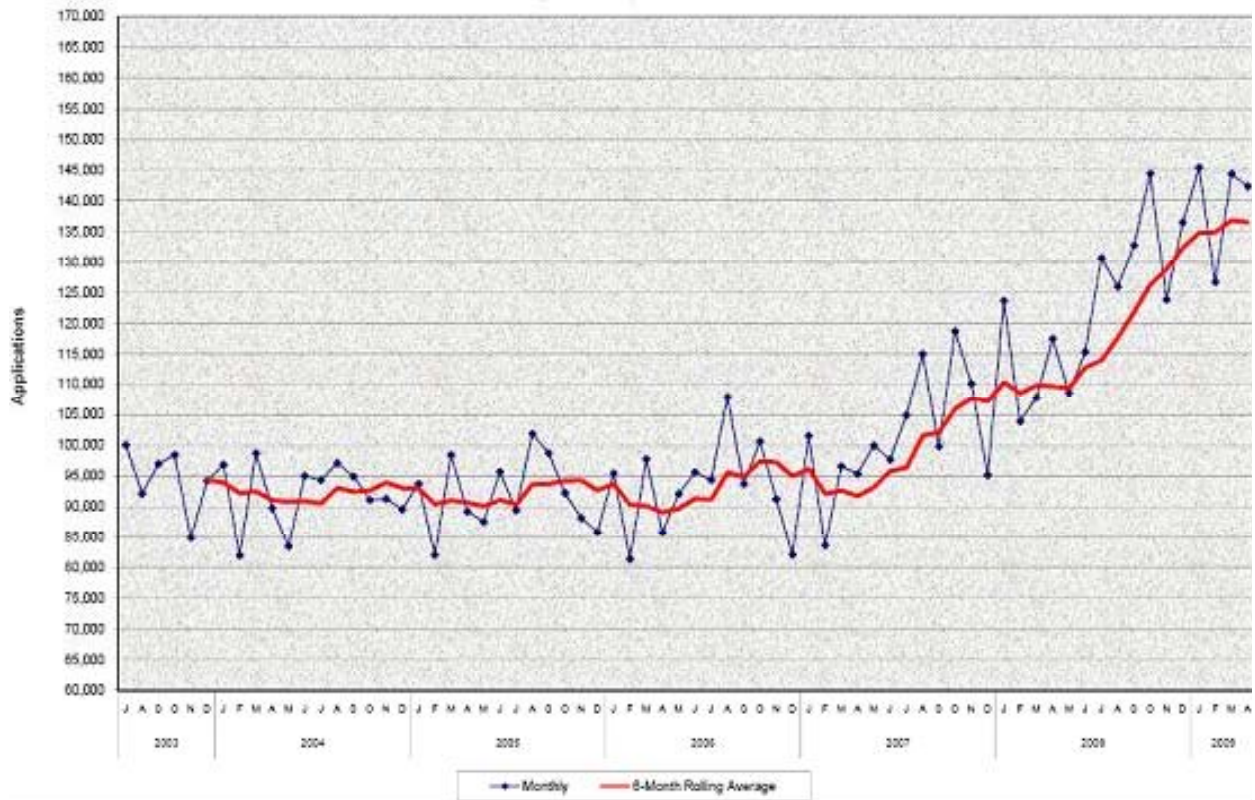
Source: California Department of Social Services

Orange County Application Received CalWORKS 2007-2009



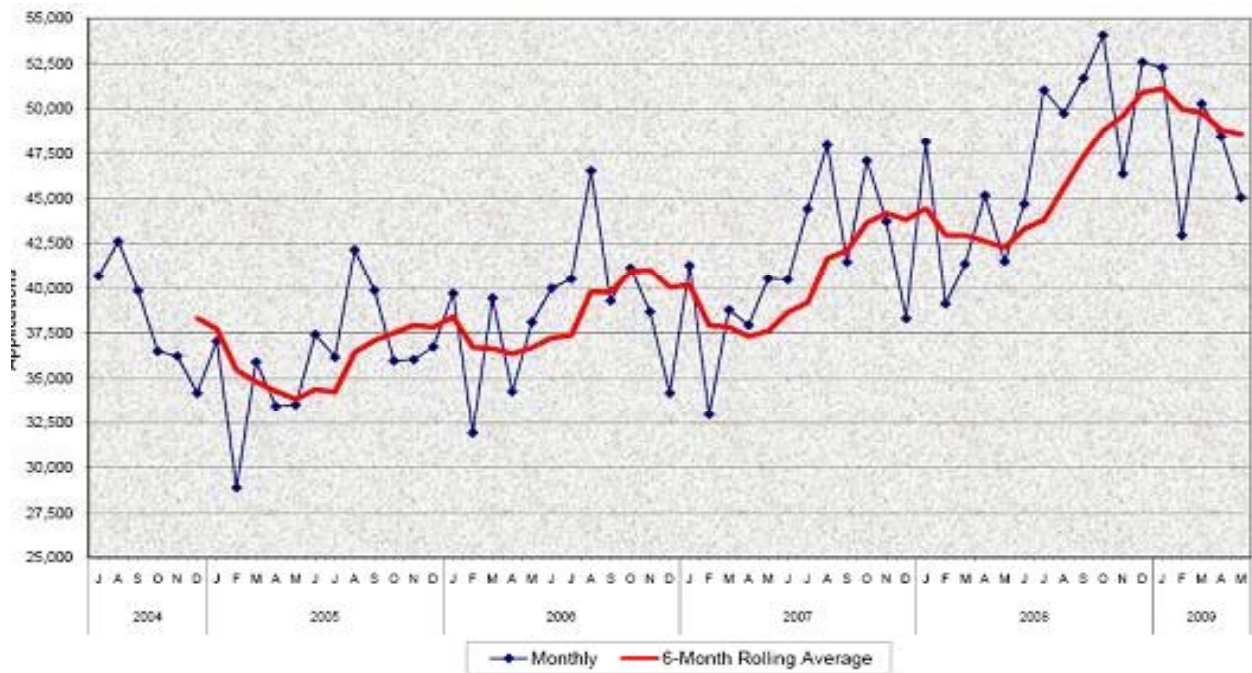
Source: California Department of Social Services

Food Stamp Applications - California



Source: California Department of Social Services

CalWORKS Applications - California



Source: California Department of Social Services