



OC REGION

QUARTERLY UPDATE

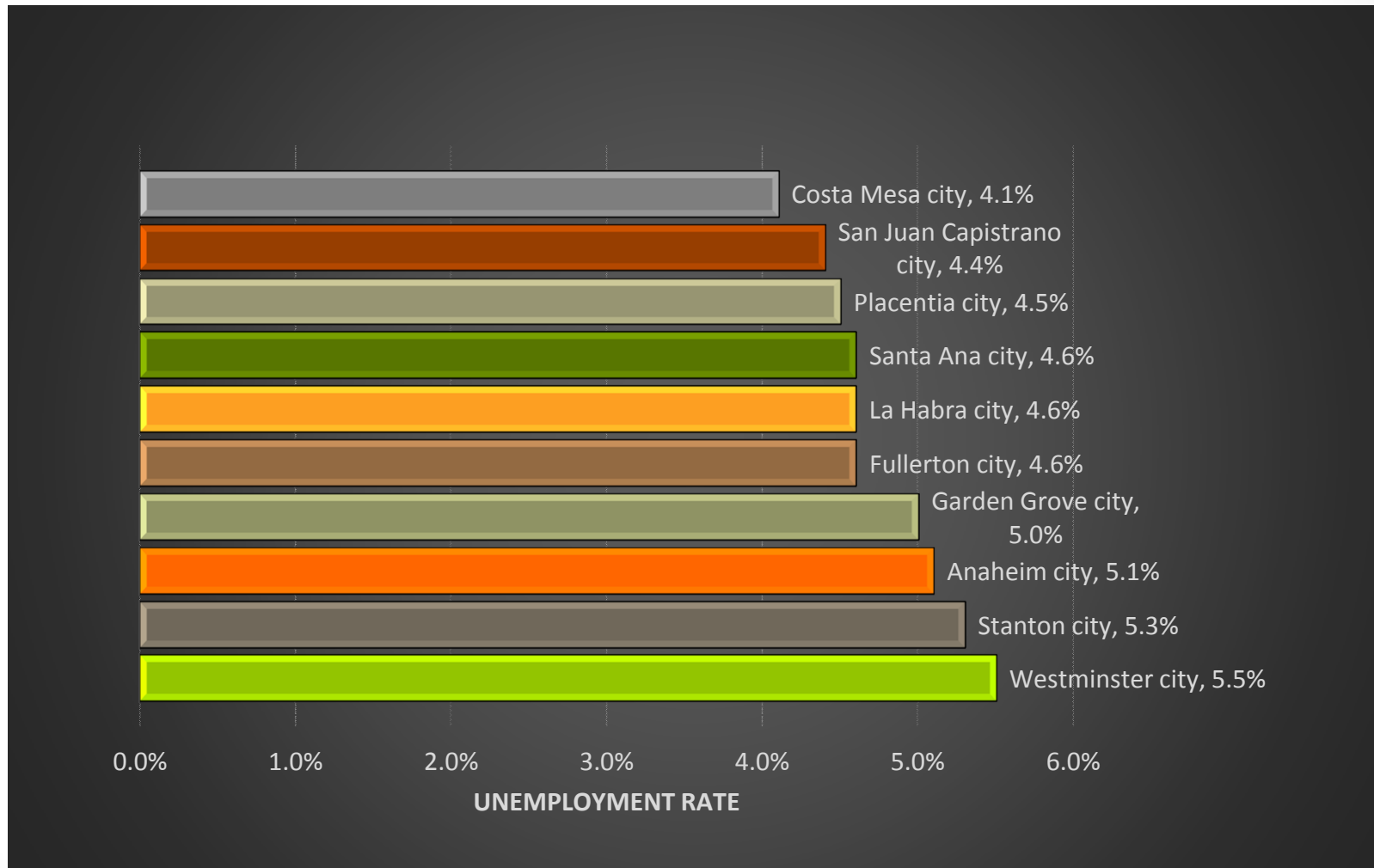
Andrew Munoz, Executive Director
Orange County Workforce Investment Board

November 5, 2015



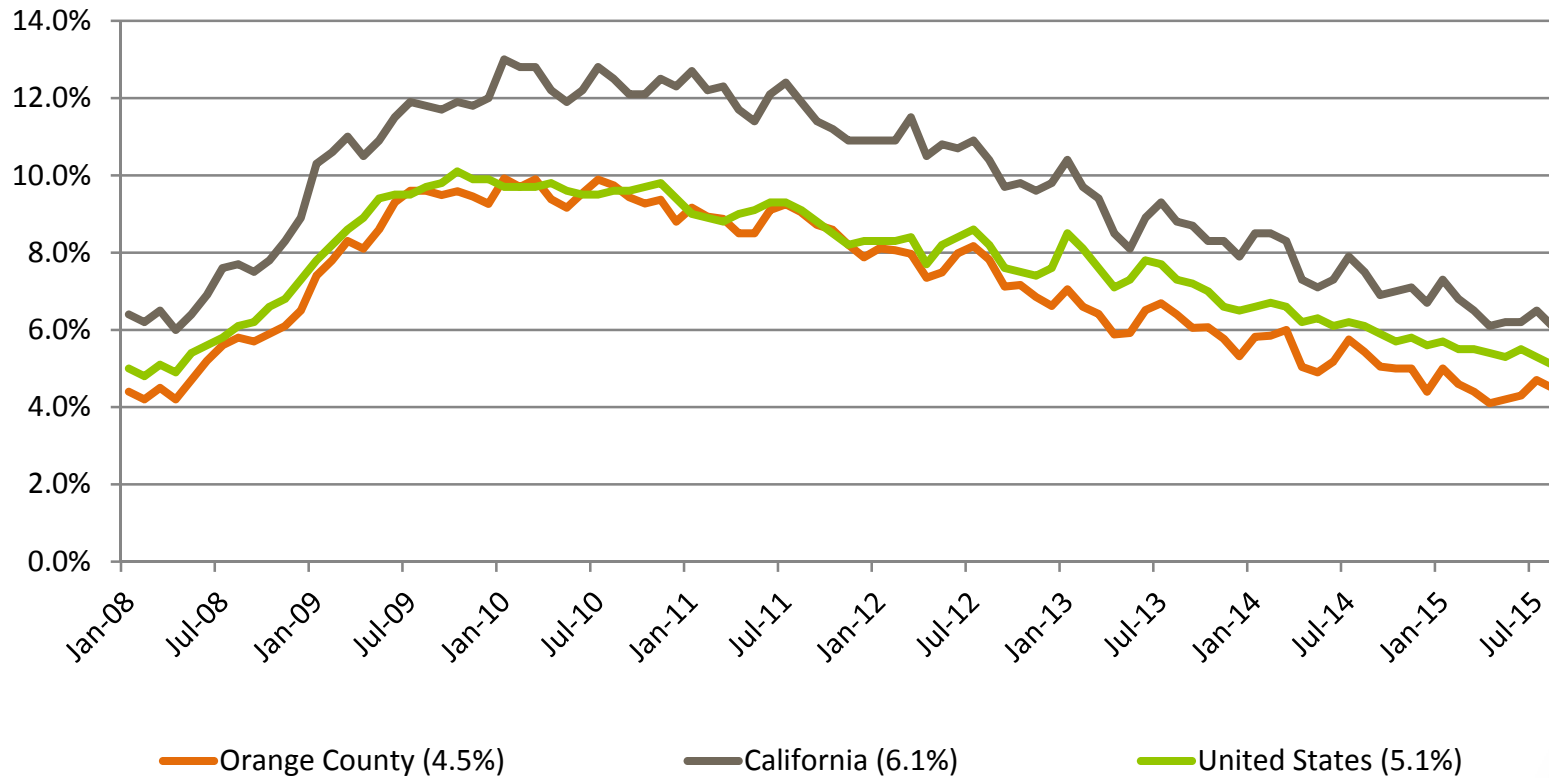
Orange County
Workforce Investment Board
Linking Business & People

OC Cities With Highest Unemployment Rates



Sources: California Employment Development Department; U.S. Bureau of Labor Statistics

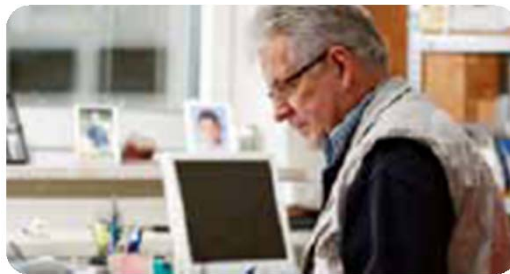
Unemployment Rate Comparisons: January 2008 – August 2015



Sources: California Employment Development Department; U.S. Bureau of Labor Statistics

OC Region Unemployment

- In August 2015, the Orange County unemployment rate decreased to 4.5 percent from 4.7 percent in July 2015 – a decrease of 0.2 percentage points since July 2015, and 1.3 percent lower than last August's unemployment rate. Statewide unemployment was 6.1 percent in August 2015, which is a 0.4 percent decrease since the previous month and 1.5 percentage points lower year-over-year.
- Industry employment changes from July to August 2015 were greatest in Leisure and Hospitality (3,100 new hires month-over-month), Construction (2,700 new hires), and Professional and Business Services (2,700 new hires). Since August 2014, the greatest job gains stem from Educational and Health Services with 9,500 new hires, or 5.1 percent annual growth.



CITY SPOTLIGHT: ORANGE

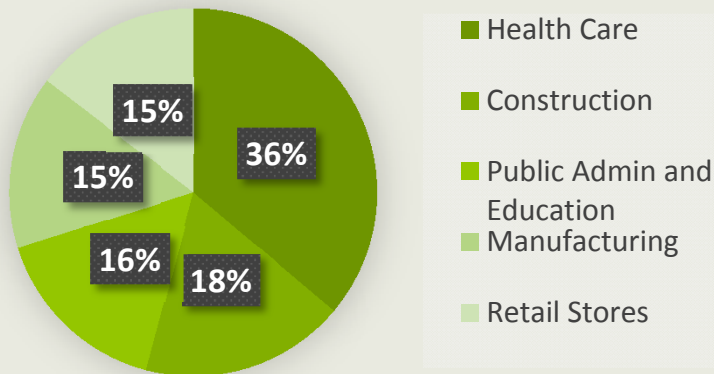
- Orange is the City with the largest health care industry in the County including but not limited to: UCI Medical Center, St. Joseph Hospital, and Children's hospital of Orange County.
- Orange's Historic District is the largest National Register District in California and holds the second largest concentration of historic buildings in the state.
 - Including the oldest operating bank and soda founding in the County.
- Films such as That Thing You Do starring Tom Hanks, Accepted starring Justin Long, Big Momma's House, Ghost Whisperer, and Black Sheep were all filmed in the historical Old Town Orange.



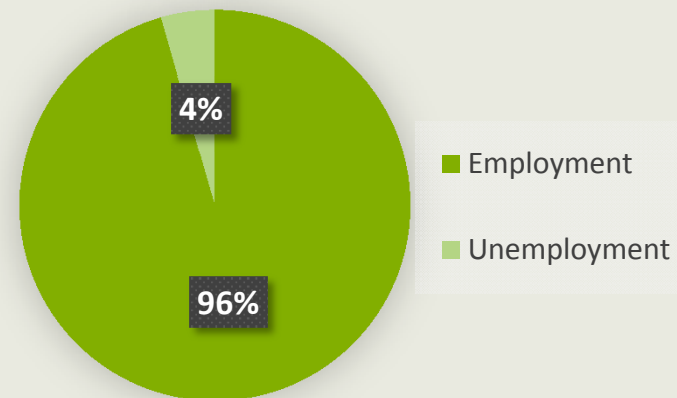
CITY SPOTLIGHT: ORANGE

- Orange has a population of 139,812
- Contributes approximately 73,900 workers to Orange County's workforce
- Out of 11,078 Orange businesses 11,065 are small businesses with fewer than 500 employees

Top Five Industry Sectors In Orange By Employment



Employment in Orange



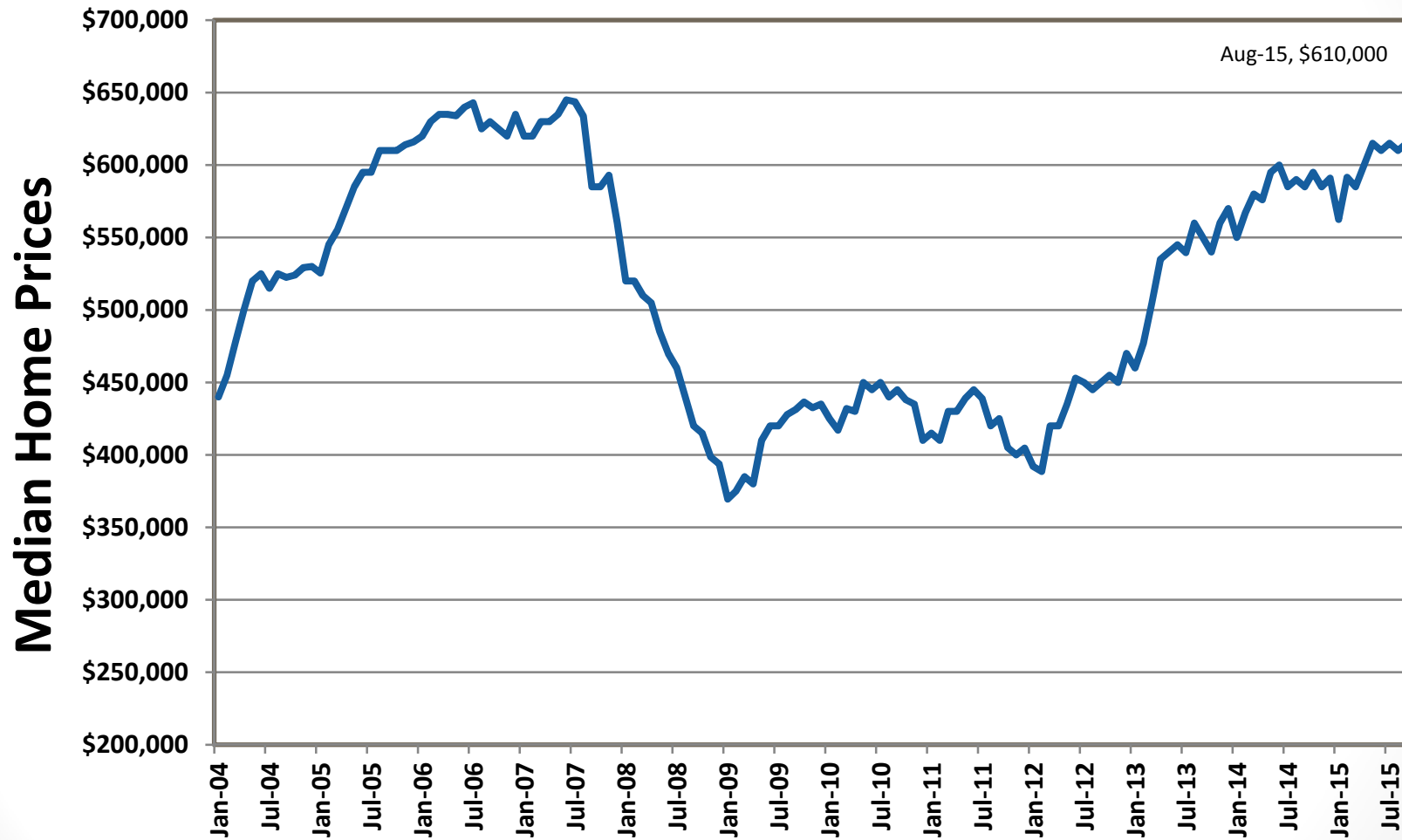
Sources: U.S. Census Bureau, Employment Development Department, National Establishment Time Series Database (Dun and Bradstreet)

Orange County Industry Employment Comparisons

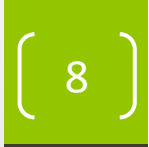
Orange County Industry Employment	Aug-14	Jul-15	Aug-15	YoY % Change	MoM % Change
Professional & Business Services	278,400	283,400	286,100	2.8%	1.0%
Educational & Health Services	187,900	197,600	197,400	5.1%	-0.1%
Leisure & Hospitality	196,900	202,200	205,300	4.3%	1.5%
Retail Trade	148,600	150,000	150,300	1.1%	0.2%
Government	141,300	147,700	142,500	0.8%	-3.5%
Durable Goods Manufacturing	117,300	121,800	120,800	3.0%	-0.8%
Financial Activities	114,800	116,000	115,900	1.0%	-0.1%
Construction	84,100	88,900	91,600	8.9%	3.0%
Wholesale Trade	82,200	83,600	83,700	1.8%	0.1%
Other Services	47,900	51,600	51,400	7.3%	-0.4%
Nondurable Goods Manufacturing	42,000	43,800	43,500	3.6%	-0.7%
Transportation, Warehousing & Utilities	26,300	27,600	27,900	6.1%	1.1%
Information	24,000	23,800	23,800	-0.8%	0.0%
Mining and Logging	700	700	700	0.0%	0.0%

Housing

Orange County Median Home Prices 2004-2015

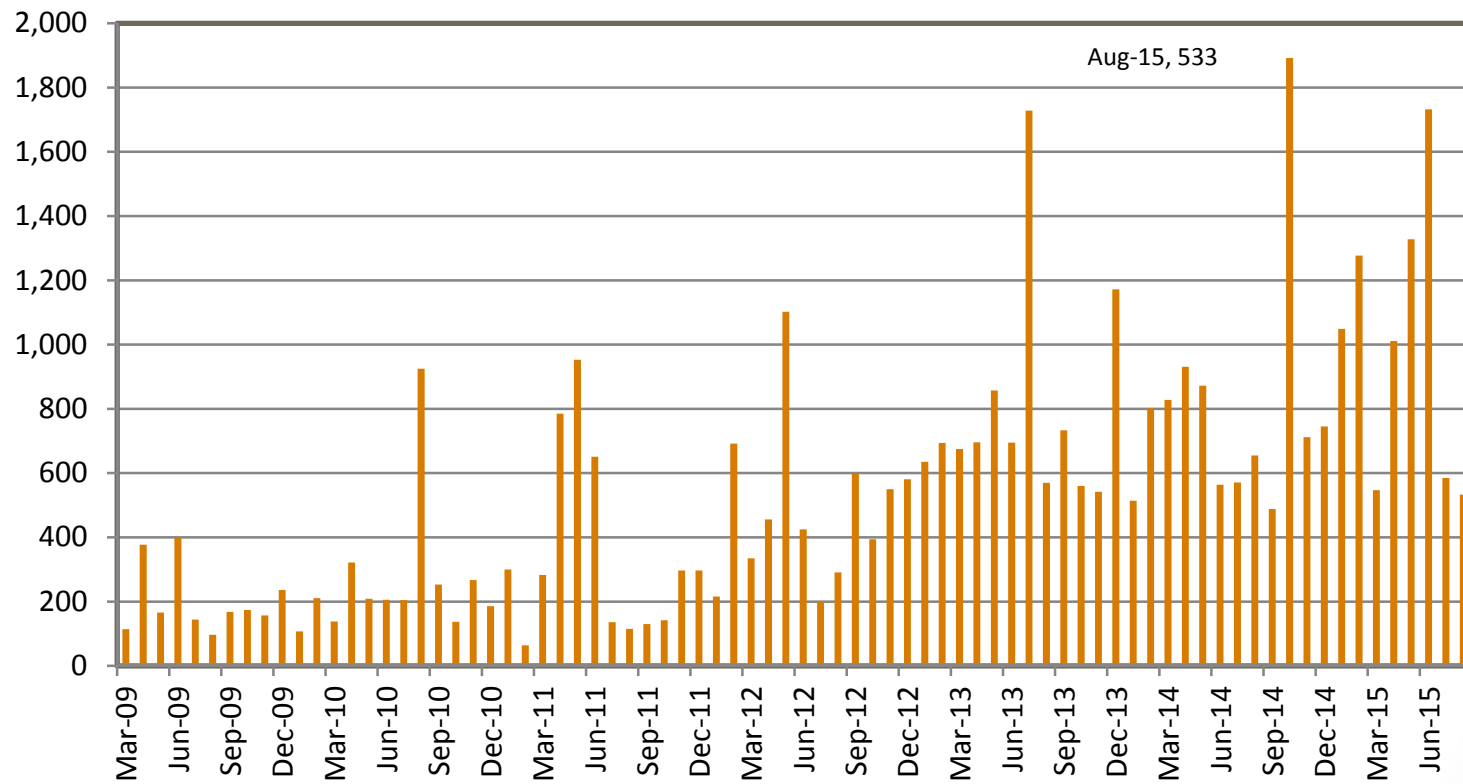


Source: DataQuick News



Housing

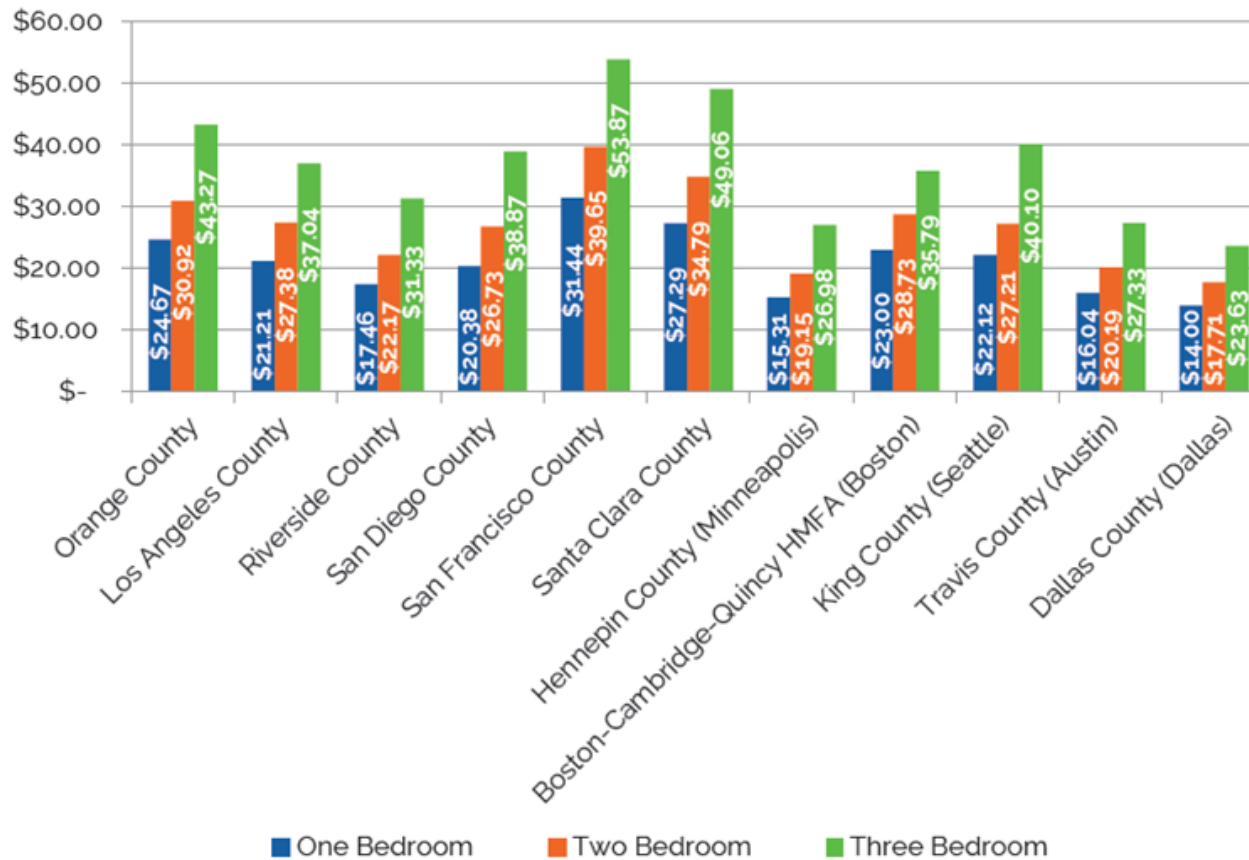
Orange County Total Housing Permits Per Month



Source: US Census Bureau Censtats

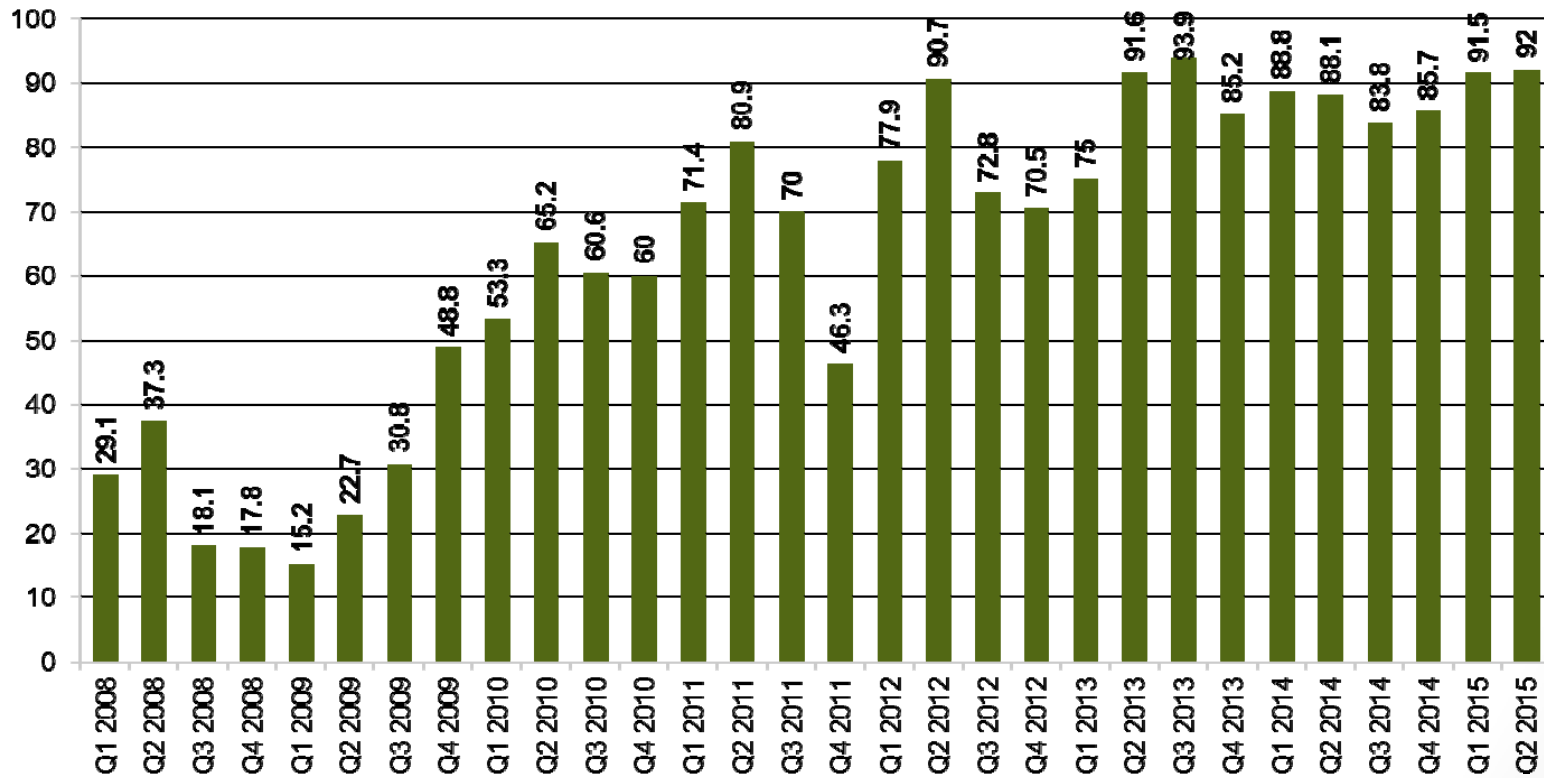
Housing

Hourly Wage Needed to Afford Fair Market Rent in 2015
Orange County vs. National Peers

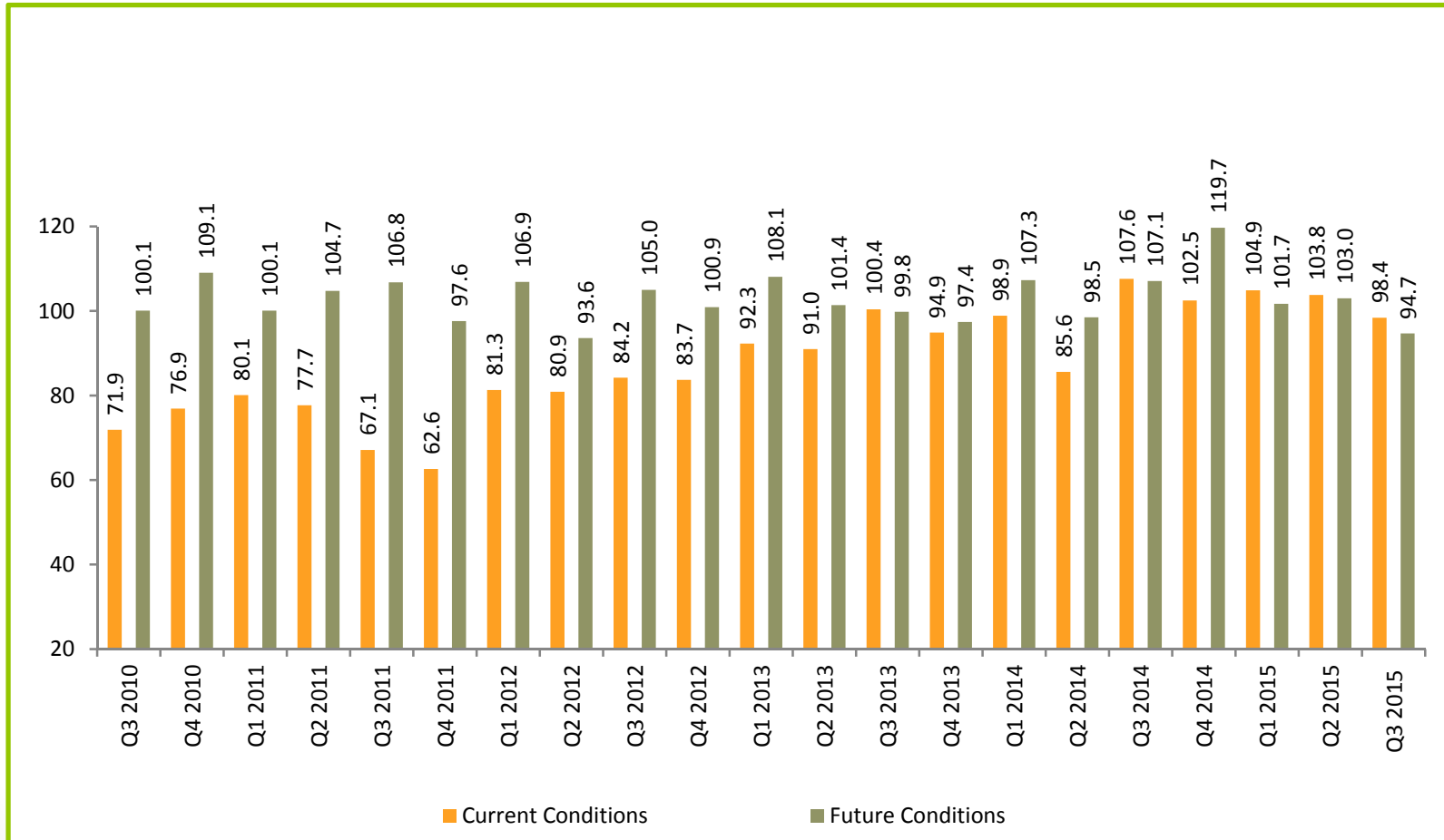


Source: National Association of Realtors

Cal State University Fullerton: Business Expectations Index



Chapman University: Current and Future Consumer Sentiment Index



EDA UPDATE

Improvements to Grant Application Processes

Process	Key Changes
Say goodbye to the ED-900 as you know it: feedback received that forms are confusing and complicated	Created a suite of shorter forms that will be specific to each program solicitation
Previous eligibility determination required submission of a full application	Introducing a short proposal form where potential applicants can determine if they meet essential criteria necessary for competitive consideration to determine if they should proceed to a full application
No more quarterly application deadlines	EDA will now accept applications at any time and accept project proposals before requiring full applications

Website Resources

- Orange County Workforce Investment Board: www.ocwib.org
- Orange County Economic Indicators: www.oceconomy.org
- Orange County Community Indicators Report:
<http://ocgov.com/gov/ceo/resources/indicators/>
- Orange County Workforce Report:
<http://ocwib.org/civicax/filebank/blobdload.aspx?BlobID=473>
14